

CLIENT :
Concorde Hotels & Resorts

ARCHITECT AND INTERIOR DESIGN :
PLC Architectures

DESIGN TEAM :
Pier Luigi Copat, Architect principal
Flavio Pisante, Massimiliano Sartori, Paolo De Luca,
Alessandra Mecchia, Collaborators

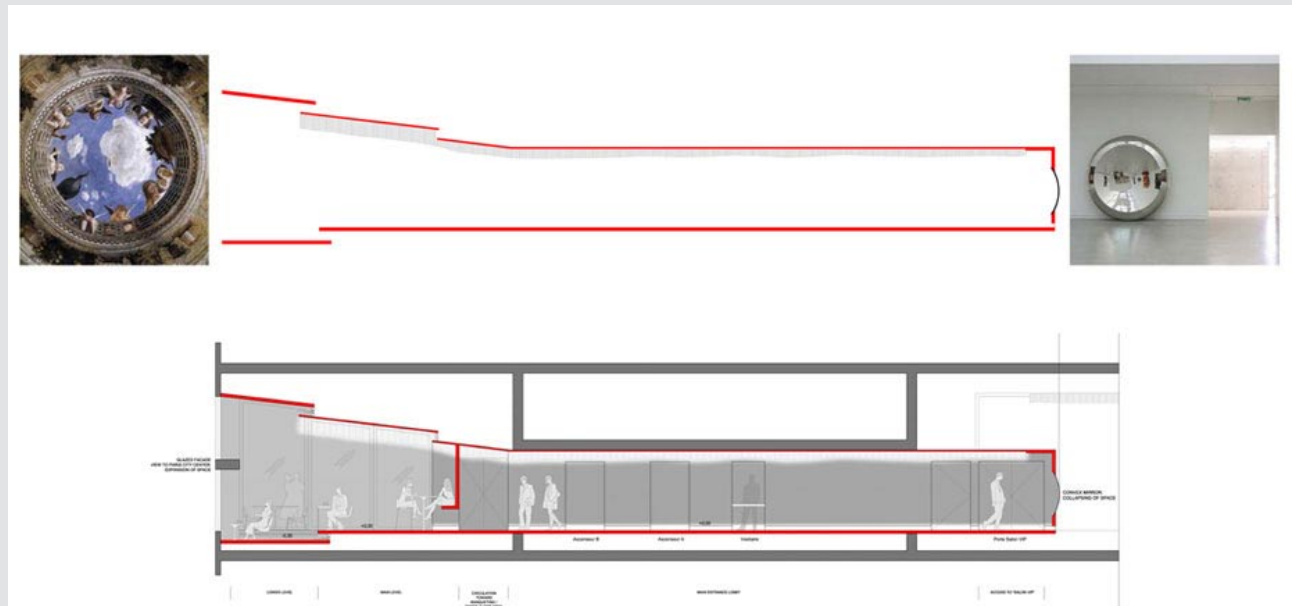
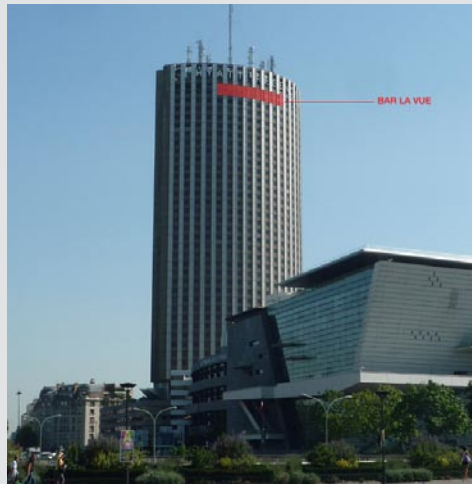
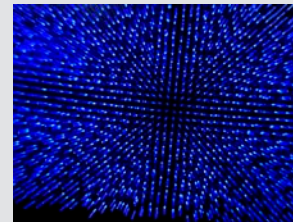
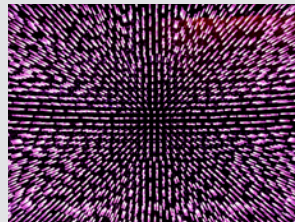
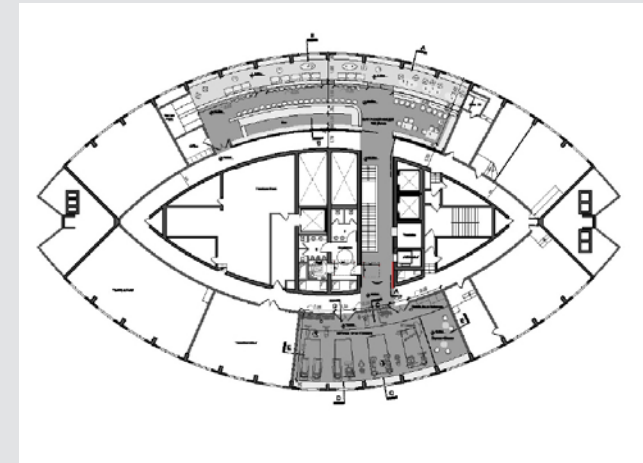
LIGHTING CEILING PROJECT " LOLIGHT " :
Pier Luigi Copat (PLC Architectures), concept and
design, Erick Hélaïne (FEERICK), LEDs lighting system
design and lighting control, BARTH, ceiling fitting
FIAM, glass rods

PROGRAM :
Panoramic bar design and lighting design.
Wellness area

COST OF WORKS :
1 700 000 €

SITE AREA :
380 m²

DATE :
Completion January 2013





BAR "LA VUE"- PARIS