

CLIENT :
Starwood Capital with Concorde Hotels & Resorts

INTERIOR DESIGN:
PLC Architectures

DESIGN TEAM :
Pier Luigi Copat, *Architect principal*
Lorenzo Baracchi, *Collaborator*

PROGRAM :
Design concept for a Baccarat Suite

Supremacy of pure feeling

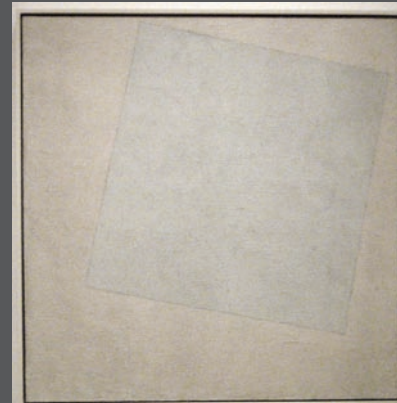
The Design Concept search take inspiration by with the 1918 Malevitch painting « White on white ».

This painting, for how abstract that could seems, it expresses at best our final goal which is to create a space that expresses and emphasize a condition of **pure feeling and elegance**. The design strategy of white on white calls for juxtapositions of same whites but expressed on different supports, materials, textures, different surfaces and different gloss values. Apparently even white will reveal hidden and surprising nuances according to lighting, reflections and angles of perception this offering elegant reliefs vibration unexpected depth.

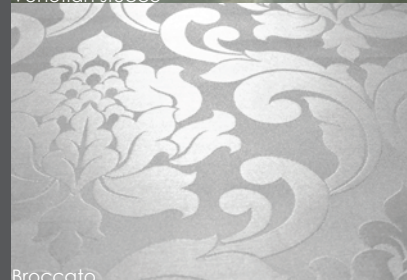
The goal is to give to solid matters the same feeling and magic of Baccarat's crystals. At the same time there is no point in trying to imitate or reproduce the same irreplaceable light games and effects of Baccarat's crystal but to search for a same kind of feeling on a matter, whether this is a wall a tapestry or flooring.

The choice of the finishes and materials for the suite Baccarat will be a gathering of materials and decorations that will be able to materialize the supremacy of pure feeling.

Kazimir Malevitch, *White on White* - 1918



Venetian stucco



Broccato

The search is for those materials or finishes that offer, already imbedded in their own construction or fabrication process, a certain field of work and research:

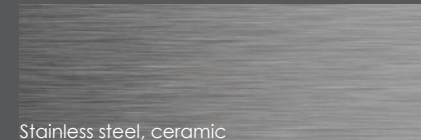
First suggestions could be:

- Venetian Stucco as per wall and ceiling finish
- Broccato or damasco fabrics for tapestry or upholstery but also wall cladding
- Velvet like, state of the art, polyester powder coatings as a finish of different elements
- brushed opposed to glass-sandblasted stainless steel
- Satin or polished lacquered wood elements

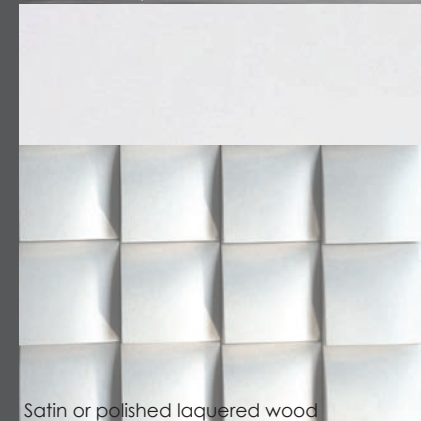
These are only suggestions. The very first step of the design should be a thorough research targeted to collect a "baccarat materials library". The design should be oriented towards a refined and elegant contemporary aura

which becomes tangible not only on the choice of materials but more important on the way these materials will be dealt with and, ultimately, on the construction details design.

With the elegant and refined contemporary aura in mind some design options could be explored as, for example, not having no marble tiles, cladding or finish for the bathrooms but prefer instead new textures and materials, generally defined as technical stones or performing large format ceramic tiles. The white on white concept should be developed on these ceramic surfaces so to find a texture that will be coherent with a given broccato's pattern that might have been chosen for the tapestry of the room.



Stainless steel, ceramic



Satin or polished lacquered wood



Furniture

The furnishing could have, on the contrary, the typical baroque look already successfully tested in other Baccarat spaces, like the Crystal Room in Paris and Moscow. Their colour and upholstery will be selected in coherence with the textures and patterns of the suite finishing materials.



«Pampille rouge»

The « *pampille rouge* », Baccarat's trademark would be of course present in the room as a design feature and not necessarily on the light fixtures that will be selected from the Baccarat's catalogue.

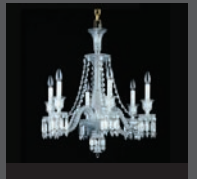
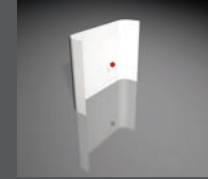
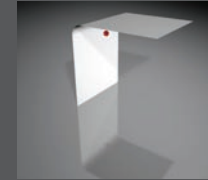
Different options can be imagined as, for example :

- one of the four crystal legs of the bed
- one of the four legs of a chair
- a glass handle
- a crystal pampille rouge inserted in the broccato wall or ceiling cladding



Create intimacy

As an attempt to define, discretely and almost subliminally, an area of intimacy within the Baccarat suite a design proposal is oriented towards the insertion of « L » shaped cladding structures that could be placed vertically, in a wall-ceiling condition (inspired by a re-interpretation of the « lit à baldequin » but not necessarily placed over the bed), or horizontally, in a wall-wall condition, so to create an intimate corner or alcove. These cladding structures would be finished in broccato/damasco fabric. The introduction of this « L » shaped cladding element will also increase the acoustic comfort and performances of the Suite Baccarat. These elements would be shop produced, therefore allowing best work conditions to perform a top quality finish, would be delivered on site ready to be mounted, representing an efficient way to reduce on site decoration works. They could be appropriately cabled and wired so to receive a LCD screen, or any other state of the art digital device.



Lighting

The lighting clearly participate to this concept since it will reveal and enhance the white-on-white effect.

Provided by the Baccarat's lamps, these will be chosen in the catalogue coherently with the design of the suite that wants to be find in the tradition of the maison the seeds to project The Baccarat Feeling in a contemporary aura. Diffused, all-around, lighting should be avoided to prefer a more scenographic and punctual lighting.

The light sources should be identified within the suite to create a cosy, intimate mood and not an « efficiently » lit, anonymous room. An easy light control device should be offered.

Avoid symmetry in positioning lighting to create a dynamically lit space.

A proposal is made to have no chandeliers in the bedroom or living room but to prefer the bathroom to receive one of these beautiful pieces as a surprising and unexpected « signature ».

The present selection of Baccarat products show some elements that for their design, crystal work and « esprit », could quite coherently complete our design concept for the Suite Baccarat.

