

CLIENT :  
ARPER s.p.a.

ARCHITECT :  
PLC Architectures

DESIGN TEAM :  
Pier Luigi Copat, *Architect principal*  
Pilar Blanes, *Project Architect*  
Alessandra Mecchia, Laure Ballu, Martina Del Nadai, Nicolas Lergeau, *Collaborators*

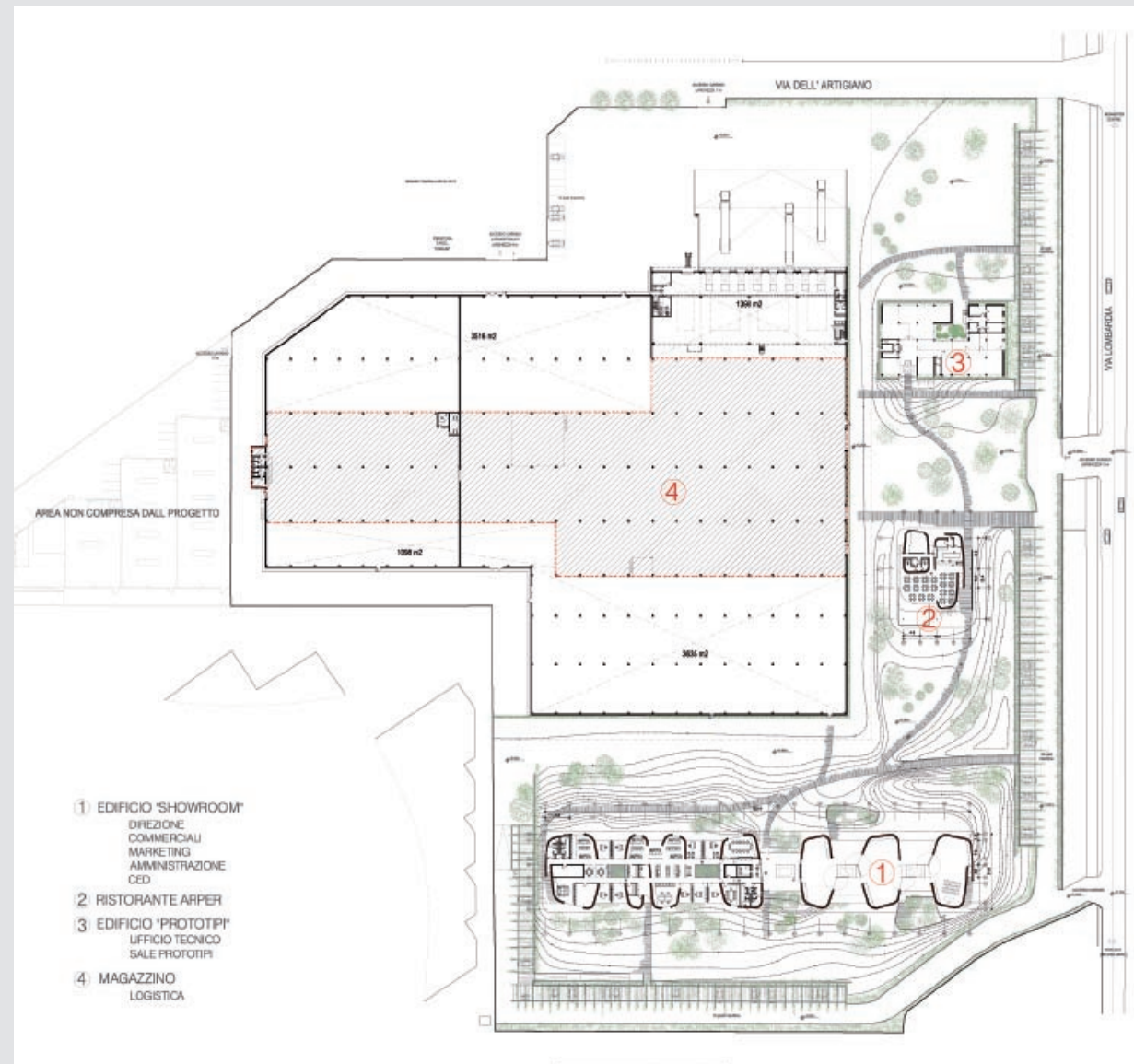
RFR Elements, Sustainability and Energy performance

PROGRAM :  
New office building and Showroom. Extension of the production building and Landscape design.

SITE AREA :  
Site : 49 500 m<sup>2</sup>  
Built Surface : 20 100 m<sup>2</sup> (3 000 m<sup>2</sup> offices + showroom ;  
17 100 m<sup>2</sup> stockage)

COST OF WORKS :  
4 200 000 €

DATE :  
2007-2008





ARPER - TREVISO